

MC

Perfect Color Matching Metallic Spray for Galvanized Materials

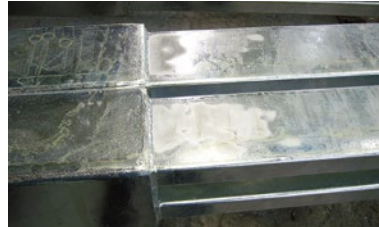
MC spray, which is ideal for color matching after hot-dip galvanization and for hiding blemishes or ROVAL repairs.



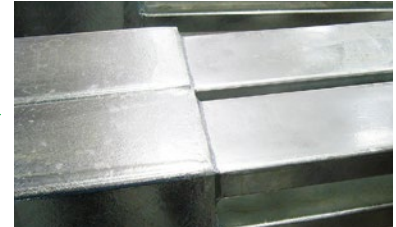
Aerosol 420ml

Coverage :	3m ² (1coat)
Dry to touch time :	15 -30 minutes
Film thickness :	10µm (1coat)
Packaging :	24 cans / case

Gray coating touch-up



Before painting

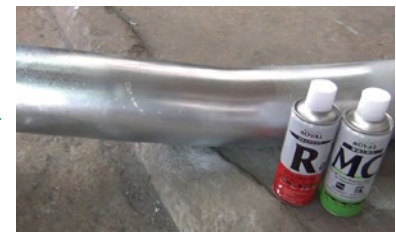


After painting

Topcoat for ROVAL



Repair with ROVAL



Apply MC for color matching

Difference from Normal silver paint

Sometimes see the use of Normal silver paint for hiding blemishes on galvanized surfaces.

At first, the galvanized surfaces is also shiny, so it is matching.

However, when the luster is lost over time, the silver part stands out.

MC is designed to lose its luster over time, just like galvanizing, and at the end MC film disappears, so the repaired part will not stand out forever.

The photo below shows a plate with MC and Normal silver paint coating on the upper half of a galvanized plate.

MC
Color is matching!

Good! **Good!**

Before exposure After 3 months

Normal silver paint

Good! **Bad!**

Before exposure After 3 months



No anti-corrosion effect.



Spray MC after applying ROVAL on cut surfaces, welds, and non-plated areas for maximum protection.

Weathering is slowed by excessively thick film.
Exposure conditions will affect the weathering rate.



ROVAL SINCE 1955 rovalworld.com

ROVAL CORPORATION (Japan)
SHANGHAI ROVAL ZINC RICH PAINT CORPORATION
ROVAL (SHANGHAI) SALES & TRADING CORPORATION

