

Performance of ROVAL

Exposure test results (Japan weathering test center in Miyakojima Island)

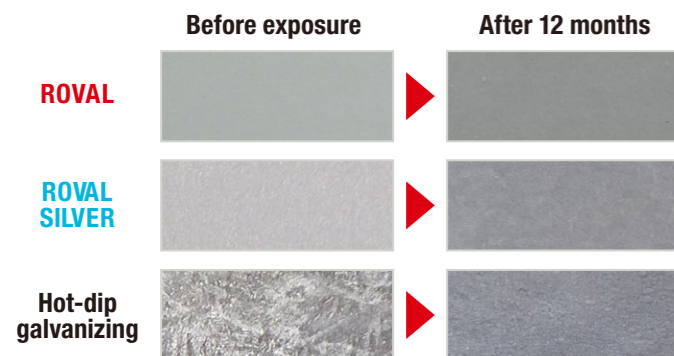


Miyakojima Island is located in the far southern part of Japan, with roughly the same latitude as Florida, U.S.A. The Island is surrounded by a lot of deteriorating factors such as high temperature, high humidity, strong sunshine, and a salt-rich atmosphere.

From normal paint to ROVAL



Color weathering of ROVAL products



Certified anti-corrosion performance



Cold Galvanizing ROVAL Method

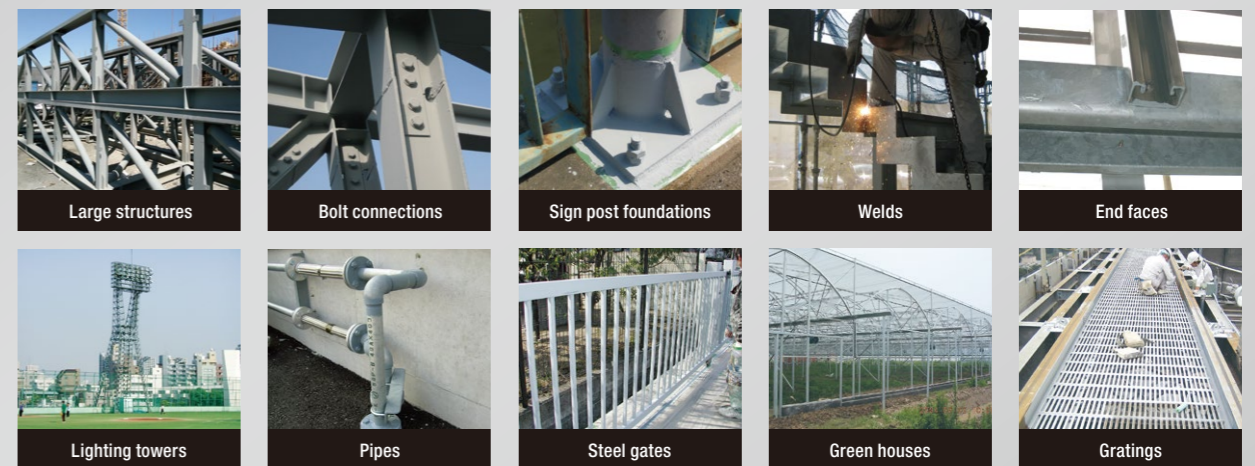
ROVAL has been certified to have equivalent anti-corrosion performance as hot-dip galvanizing by the Council for Construction Technology Review and Certification in Japan.

ROVAL Superior anti-corrosion paint

Equivalent anti-corrosion performance to hot-dip galvanizing



Applications



Distributor in Thailand

THAI NISSEI Co.,Ltd.

75/105 Ocean Tower II 38F RoomB, Sukhumvit Soi 19Rd.
Klongtoey Nua Wattana Bangkok 10110 Thailand
TEL: +66(0)2-665-2527

thai-nissei.com

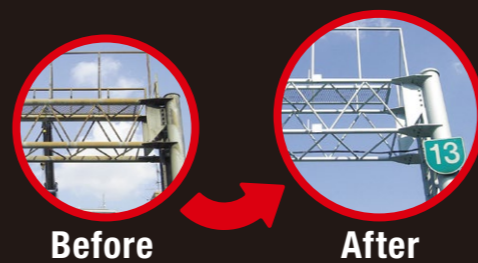


SINCE 1955
ROVAL rovalworld.com

ROVAL CORPORATION (Japan)
SHANGHAI ROVAL ZINC RICH PAINT CORPORATION
ROVAL (SHANGHAI) SALES & TRADING CORPORATION



2025.03



Cold Galvanizing Compound
ROVAL
ローバル



Cold Galvanizing Compound

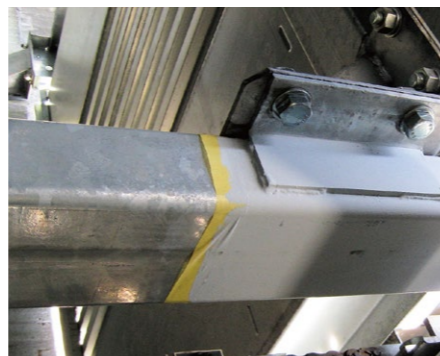
R

ROVAL
Cold Galvanizing Compound
ローバル

Equivalent anti-corrosion performance to hot-dip galvanizing.

Zinc Content
96%

Meets ASTM A780, ISO1461



Color Sample



Color : Gray



Volume	420ml Aerosol	1kg	2.5kg	10kg	25kg
Theoretical coverage (80µm)	0.5m ²	2m ²	5m ²	20m ²	50m ²

Silver Zinc Rich

RS

ROVAL SILVER
Zinc Rich Compound
ローバル シルバー

Finishes in a color similar to hot-dip galvanizing.

Zinc Content
83%

Contains Aluminum

Meets ISO1461



Color Sample



Color : Silver

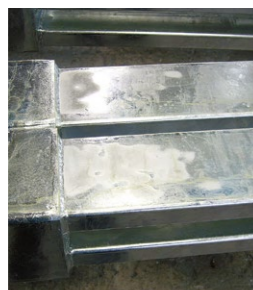


Volume	420ml Aerosol	0.7kg	1.5kg	7kg	20kg
Theoretical coverage (80µm)	0.4m ²	1.4m ²	3m ²	14m ²	40m ²

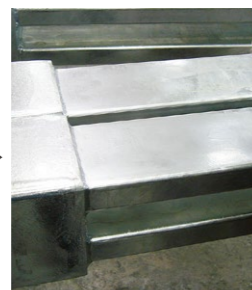
MC

Perfect Color Matching Metallic Spray (No anti-corrosion effect)

Gray coating touch-up



Before



After

Topcoat for ROVAL



Repair with ROVAL



Apply ROVAL MC for color matching

ROVAL MC Color Matching Metallic Spray for Galvanized materials
Coverage : 3m²

Features Ready-to-use single liquid type

Dilution is unnecessary so painting is very easy.

No troublesome work, like mixing two liquids.

Aerosol product lineup.



Application methods

Brush



Roller



Conventional / Air-less spray



Necessary steps

ROVAL has to be applied DIRECTLY to metal surfaces.

The direct contact between the zinc and the metal surface will result in cathodic reaction.

Prohibited steps

Never use primers.

Primer will compromise the performance of Roval products.

3 important points

1 ▶ Surface preparation



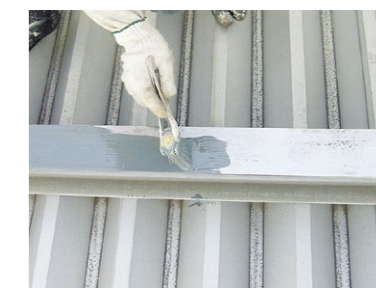
Prepare the metal surface by sandblasting or with appropriate power tools.
Remove all contamination on the surface such as moisture, oil, mill scale, rust, and old paint.

2 ▶ Adequate agitation of product



Agitate the products well to obtain uniform density.
Dilution is not required.
*Only when the product thickens, use aromatic thinner such as Xylene. (Within 5% of paint weight)

3 ▶ Sufficient film thickness



Apply two coats. (Each coat: 40µm)
Total dry film thickness = more than 80µm
Do not spread the paint too thin.
Anti-corrosion performance is proportional to dry film thickness.
Coating interval : 30~60min

Wrong application

Applying product to rusted surfaces



Applying product to painted surfaces

