

# ROVAL Superior anti-corrosion paint

Equivalent anti-corrosion performance to hot-dip galvanizing

## Anti-corrosion protection for steel



Steel frame



Solar panel

## Restoration of galvanized surfaces



Cut surfaces



Non-plated parts

## An alternative to hot-dip galvanizing



Large parts



Weak parts that are easily deformed under high temperatures

## Renovation of galvanized surfaces

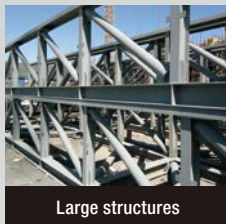


Steel towers



Mechanical parking lots

## Applications



Large structures



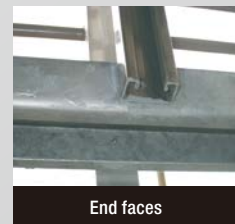
Bolt connections



Sign post foundations



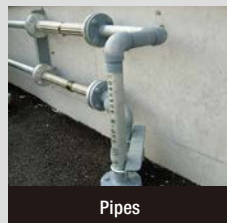
Welds



End faces



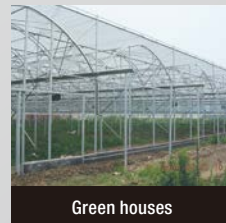
Lighting towers



Pipes



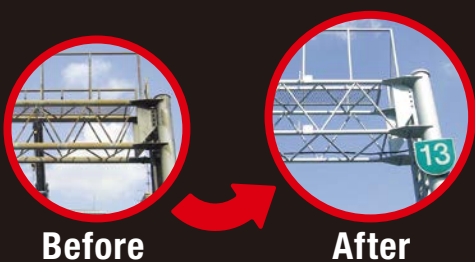
Steel gates



Green houses



Gratings



Before

After



Cold Galvanizing Compound

**ROVAL**

ローバル



## Cold Galvanizing Compound

# R

## ROVAL

Cold Galvanizing Compound

ローバル

Color Sample



Color : Gray

### Equivalent anti-corrosion performance to hot-dip galvanizing.

Zinc Content  
**96 %**

Meets ASTM A780, ISO1461



Volume	420ml Aerosol	1kg	2.5kg	10kg	25kg
Theoretical coverage (80µm)	0.5m <sup>2</sup>	2m <sup>2</sup>	5m <sup>2</sup>	20m <sup>2</sup>	50m <sup>2</sup>

## Silver Zinc Rich

# RS

## ROVAL SILVER

Zinc Rich Compound

ローバル シルバー

Color Sample



Color : Silver

### Finishes in a color similar to hot-dip galvanizing.

Zinc Content  
**83 %**

Contains Aluminum

Meets ISO1461



Volume	420ml Aerosol	0.7kg	1.5kg	7kg	20kg
Theoretical coverage (80µm)	0.4m <sup>2</sup>	1.4m <sup>2</sup>	3m <sup>2</sup>	14m <sup>2</sup>	40m <sup>2</sup>

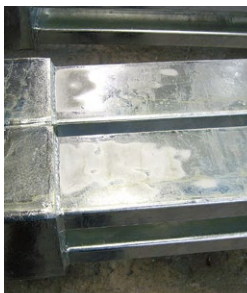
# MC

## Perfect Color Matching Metallic Spray (No anti-corrosion effect)



ROVAL MC Color Matching Metallic Spray for Galvanized materials  
Coverage : 3m<sup>2</sup>

Gray coating touch-up



Before

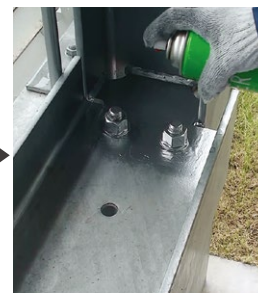


After

Topcoat for ROVAL



Repair with ROVAL



Apply ROVAL MC for color matching

## Features

# Ready-to-use single liquid type

Dilution is unnecessary so painting is very easy.

No troublesome work, like mixing two liquids.

Aerosol product lineup.



## Application methods

### Brush



### Roller



### Conventional / Air-less spray



## Necessary steps

**ROVAL has to be applied DIRECTLY to metal surfaces.**

The direct contact between the zinc and the metal surface will result in cathodic reaction.

## ✗ Prohibited steps

**Never use primers.**

Primer will compromise the performance of Roval products.

## 3 important points

### 1 ▶ Surface preparation



Prepare the metal surface by sandblasting or with appropriate power tools.  
Remove all contamination on the surface such as moisture, oil, mill scale, rust, and old paint.

### 2 ▶ Adequate agitation of product



Agitate the products well to obtain uniform density.

**Dilution is not required.**

\*Only when the product thickens, use aromatic thinner such as Xylene. (Within 5% of paint weight)

### 3 ▶ Sufficient film thickness



**Apply two coats. (Each coat: 40µm)**

Total dry film thickness = more than 80µm

**Do not spread the paint too thin.**

Anti-corrosion performance is proportional to dry film thickness.

Coating interval : 30~60min



## Wrong application

Applying product to rusted surfaces



Applying product to painted surfaces



# Performance of ROVAL

## Exposure test results (Japan weathering test center in Miyakojima Island)

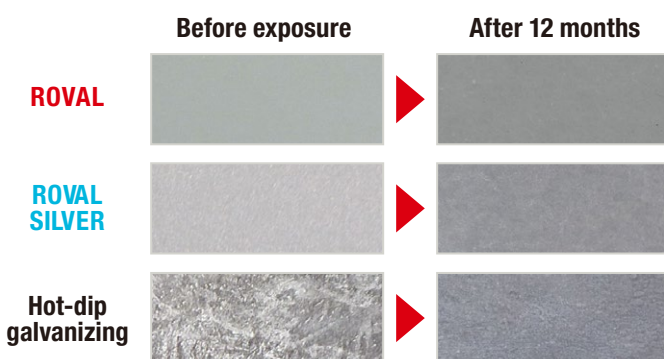


Miyakojima Island is located in the far southern part of Japan, with roughly the same latitude as Florida, U.S.A. The Island is surrounded by a lot of deteriorating factors such as high temperature, high humidity, strong sunshine, and a salt-rich atmosphere.

## From normal paint to ROVAL



## Color weathering of ROVAL products



## Excellent anti-corrosion performance



## Compliant with ISO12944 C5-High

ROVAL combines the ease of painting with the excellent corrosion resistance of hot-dip galvanizing, and can be expected to have a durability life of 15 to 25 years even in high humidity and highly corrosive environments.

### Distributor in Vietnam

#### GSI CREOS VIETNAM CO., LTD

Room W1.0510, 5th Floor, Building W1, Vinhomes West Point,  
Pham Hung Street, Me Tri Ward, Nam Tu Liem District, Hanoi, Vietnam  
TEL: +84-24-3350-5053  
Email: ghn@gsicreos.com.vn  
https://gsicreos.com.vn

GSI Creos



SINCE 1955  
**ROVAL** rovalworld.com



ROVAL CORPORATION (Japan)  
SHANGHAI ROVAL ZINC RICH PAINT CORPORATION  
ROVAL (SHANGHAI) SALES & TRADING CORPORATION