

MC

Perfect Color Matching Metallic Spray for Galvanized Materials

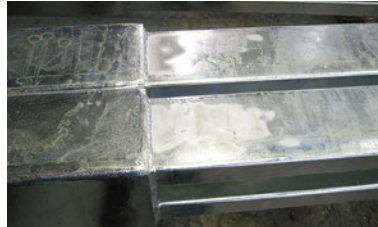
ROVAL MC Color Matching Metallic Spray for Galvanized materials, which is ideal for color matching after hot-dip galvanization and for hiding blemishes or ROVAL repairs.



ROVAL MC Color Matching Metallic Spray for Galvanized materials

Coverage :	3m ² (1coat)
Dry to touch time :	15 -30 minutes
Film thickness :	10µm (1coat)
Packaging :	24 cans / case

Gray coating touch-up



Before painting

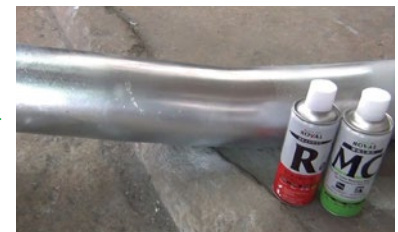


After painting

Topcoat for ROVAL



Repair with ROVAL



Apply ROVAL MC for color matching

Difference from Normal silver paint

Sometimes see the use of Normal silver paint for hiding blemishes on galvanized surfaces.

At first, the galvanized surfaces is also shiny, so it is matching.

However, when the luster is lost over time, the silver part stands out.

ROVAL MC is designed to lose its luster over time, just like galvanizing, and at the end ROVAL MC film disappears, so the repaired part will not stand out forever.

The photo below shows a plate with ROVAL MC and Normal silver paint coating on the upper half of a galvanized plate.

ROVAL MC

Color is matching!

Good! **Good!**

Before exposure After 3 months

Normal silver paint

Color mismatched!

Good! **Bad!**

Before exposure After 3 months



No anti-corrosion effect.



Spray ROVAL MC after applying ROVAL on cut surfaces, welds, and non-plated areas for maximum protection.

Weathering is slowed by excessively thick film. Exposure conditions will affect the weathering rate.



SINCE 1955
ROVAL rovalworld.com

ROVAL CORPORATION (Japan)
SHANGHAI ROVAL ZINC RICH PAINT CORPORATION
ROVAL (SHANGHAI) SALES & TRADING CORPORATION

